



Higher Education Work

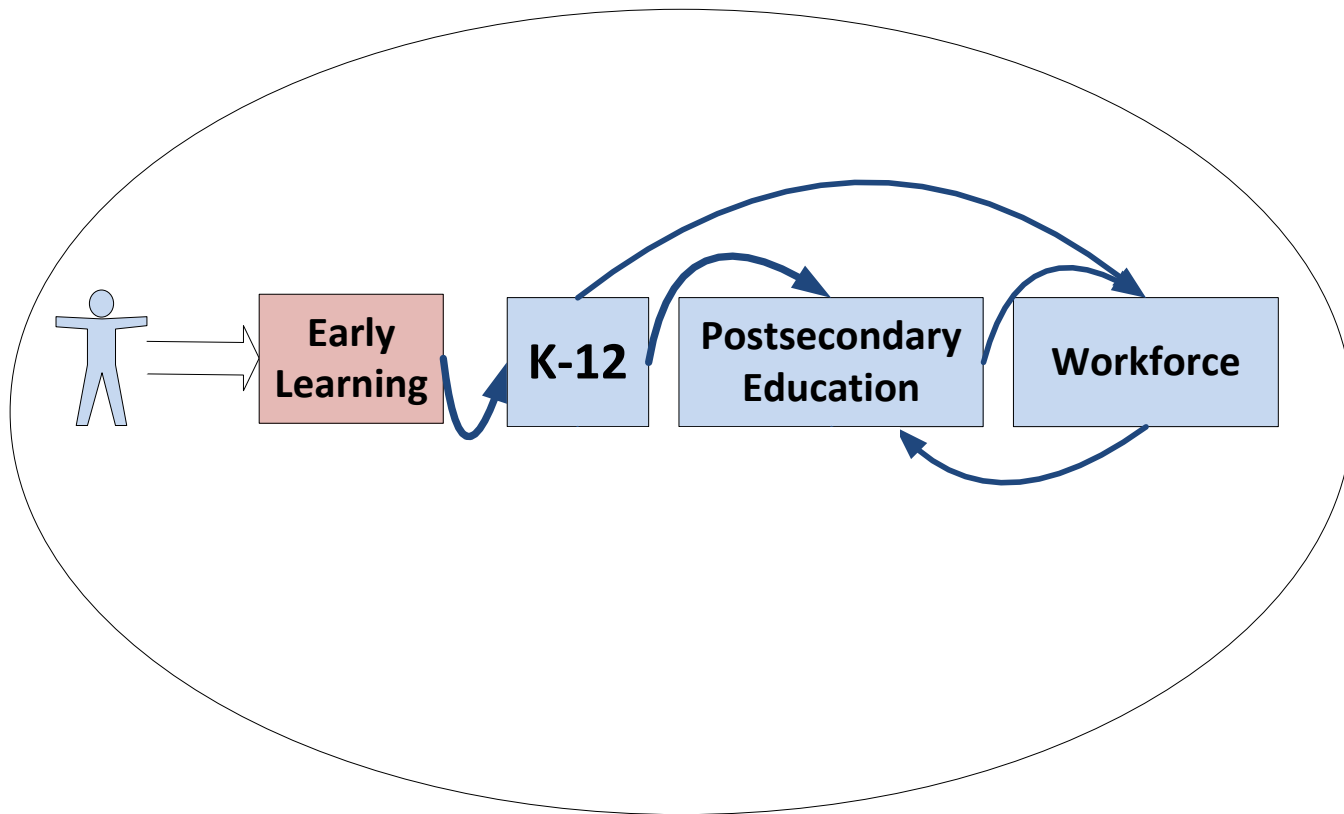
Intercollege Relations Commission Meeting

October 13, 2017

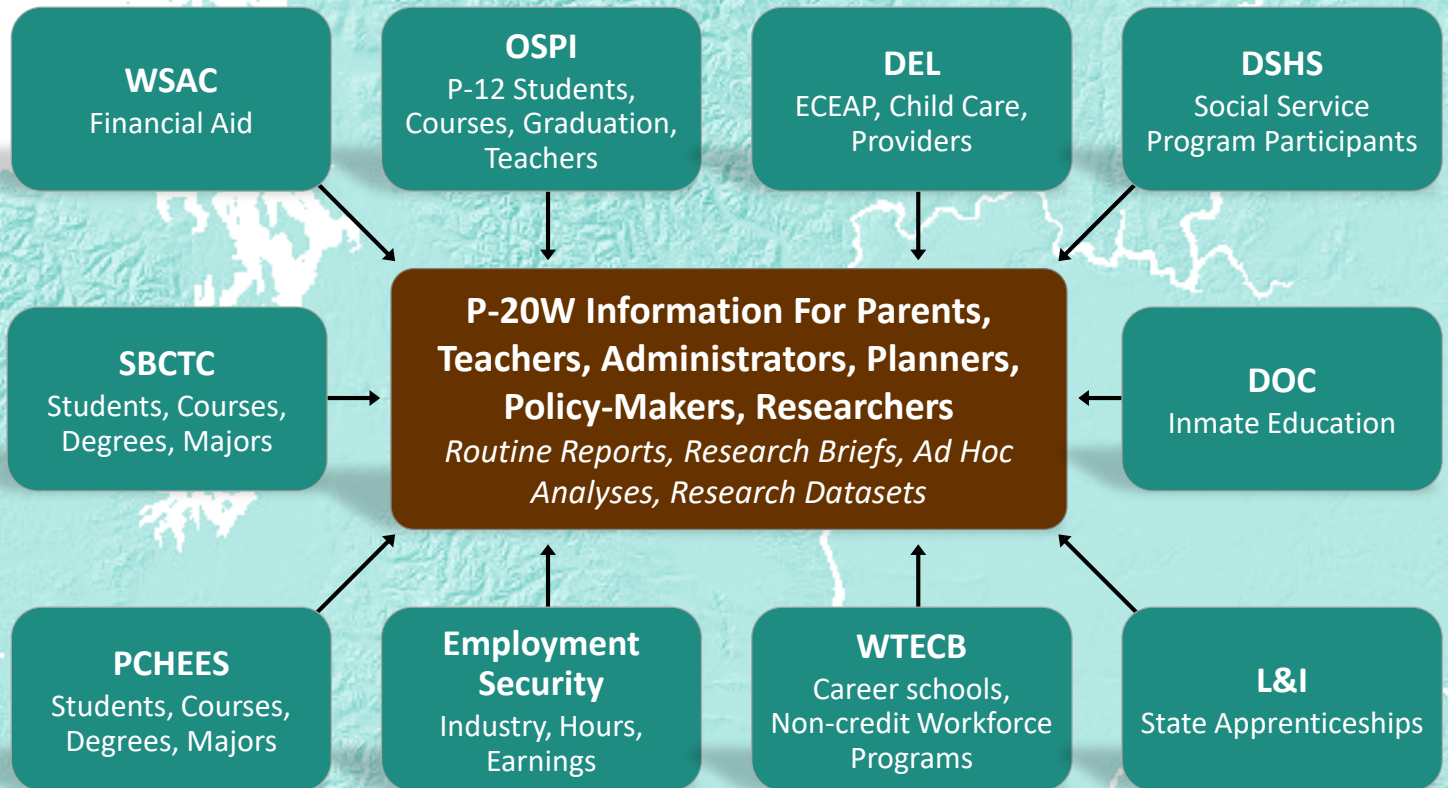
Melissa Beard, Data Governance Coordinator

ERDC Mission

To develop longitudinal information spanning the early learning through workforce system in order to facilitate analyses, provide meaningful reports, collaborate on education research, and share data.



Washington P20W data



DEL: Dept of Early Learning

DOC: Dept of Corrections

DSHS: Dept of Social
and Health Services

WSAC – Washington Student
Achievement Council

L&I: Labor and Industries

OSPI: Office of
Superintendent of Public
Instruction

PCHEES: Public Centralized
Higher Education Enrollment
System

SBCTC: State Board for
Community and Technical
Colleges

WTECB: Workforce Training
and Education Coordinating
Board

ERDC Priorities

- Legislative and Governor requests
 - Range from quick answers to full reports
- Partner agency requests
 - Currently have 30 annual requests we fulfill

Recent Publications

- Economic Returns of a WA Education
 - [STEM Bachelor's Degrees: The Gender deficit by Major and Race Category](#)
 - [Comparison of Pathways to Bachelor's Degrees](#)
 - [Earnings Premium Estimates for Bachelor's Degrees](#)
 - [Earnings Premium Estimates for Associate Degrees](#)

Recent Publications (continued)

- Student Outcomes
 - [Characteristics and Experiences of Students Transfer to Four-year Institutions](#)
 - [Persistence and Completion of Students Receiving Need-based Financial Aid](#)

Current and Future Studies

- Predictive models incorporating financial aid data
- Predictive models for postsecondary completion rates
- STEM analysis

Expansion of online reporting

- High school feedback report
 - include workforce and multiple years of follow-up that would include college persistence and completion
- [Earnings for graduates report](#)
 - include more years of follow-up, industry
- Public Four-Year Dashboard

Of Other Interest

- Other work in the following areas:
 - Juvenile Justice (AOC)
 - Social Services (DSHS for TANF data)
 - Early Learning
 - Data communication/coaching, visualization
- Multi-state Longitudinal Data Exchange project with WICHE

Questions?

Melissa Beard

Melissa.beard@ofm.wa.gov

Office of Financial Management

www.erd.c.wa.gov

360-902-0584

