



CENTRAL WASHINGTON UNIVERSITY

EASTERN WASHINGTON UNIVERSITY

THE EVERGREEN STATE COLLEGE

UNIVERSITY OF WASHINGTON

WASHINGTON STATE UNIVERSITY

WESTERN WASHINGTON UNIVERSITY

WASHINGTON STATE

Council of
Presidents

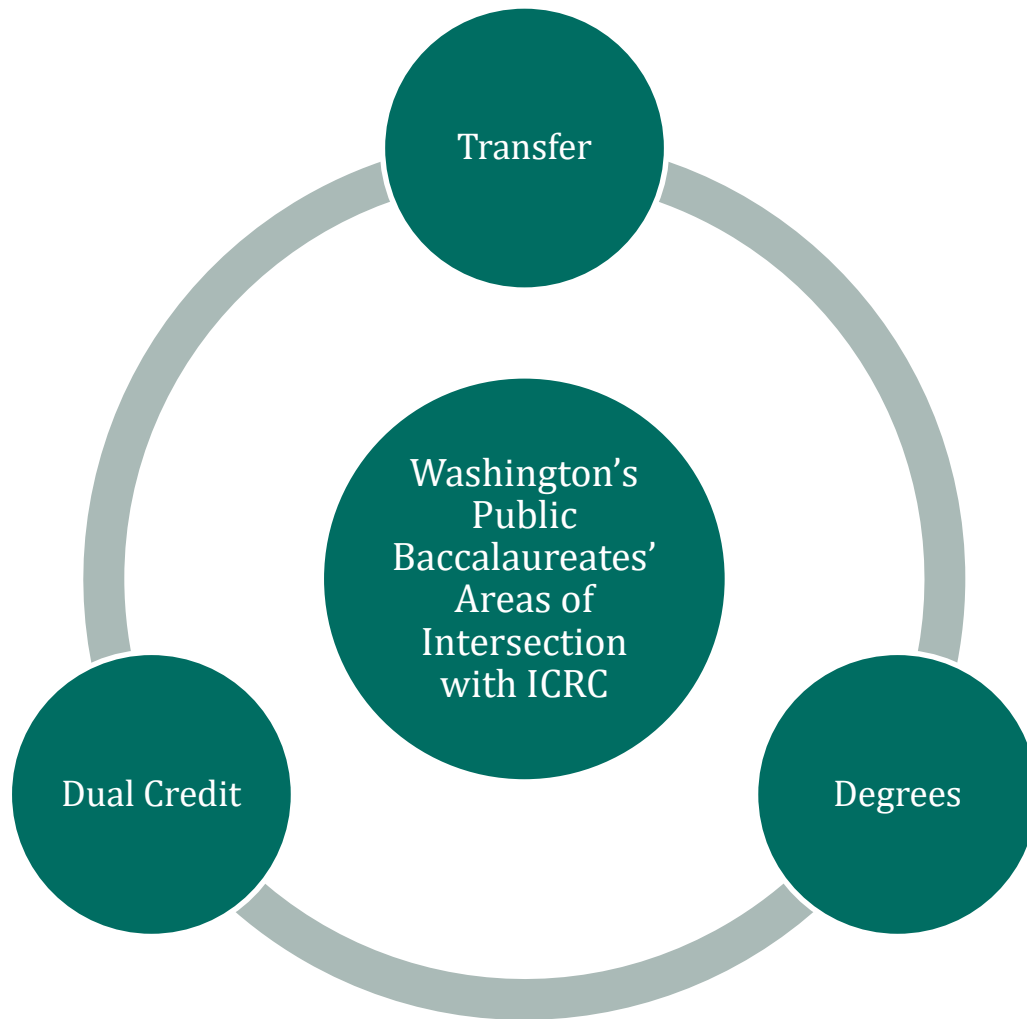
ICRC Fall Meeting
April 2019

Julie Garver, Director of Policy and Academic Affairs

ABOUT COP

COP is an association of Washington's six public four-year degree granting college and universities. We strive to be a common voice for the public four-year universities and college and the most respected and trusted resource for decision makers on issues affecting public higher education. We foster coordination and collaboration among the public, four-year universities and college as well as with myriad other partners.





Concurrent Enrollment & College Preparatory Programs with Exams

Concurrent Enrollment

Finalized WAC revisions.
Public hearing set May 8

Gearing up for 2020-21
review process

Final stages of CiHS FAQ

College Preparatory Programs with Exams

Institutions have completed a majority of review for AP and IB; Process of posting to websites and presenting for AY 2019-20 academic catalogs

Developing a CPPE FAQ

Outreach

Dual Credit Event Planning

Engaged with key state stakeholders

Transfer and Degrees

Transfer Focused Information



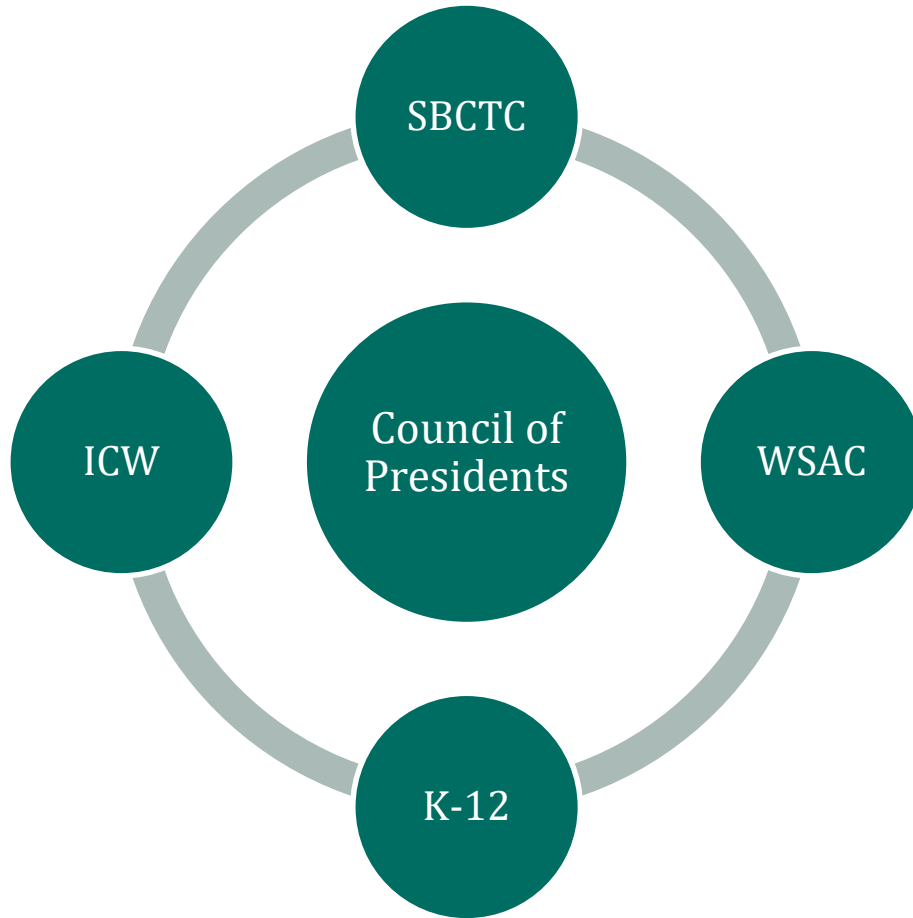
- COP public baccalaureate transfer
- Joint COP, ICW and SBCTC transfer
- Statway Sector Statement

Degrees



- BAS Degrees: Collaboration and Cross-sector communication
- Lead ICAPP work; Developing FAQ about the degree planning process

Education Partners



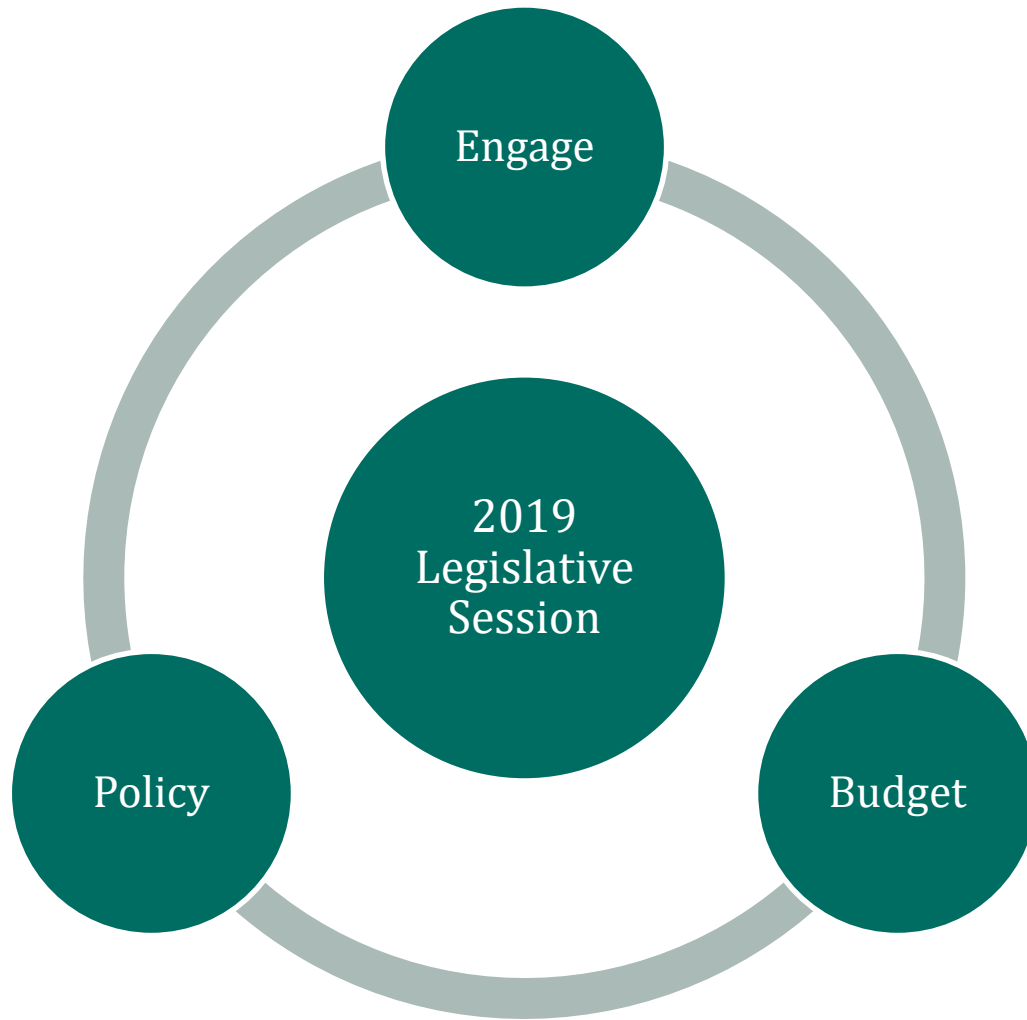
Working Across Sectors and Agencies

Degree Pathways

Reviewing Degree-Authorization WAC
Washington Computer Science and Engineering Council (WACSE)

Outreach/Initiatives

Career Connected Learning
Multi-Sector Work Group Public Benefits Access
Pathways Forum
Complete Count Committee
Future of Work Task Force
Credential Engine
Action Alliance for Suicide Prevention
Washington Council
STEM Alliance
WSAC Adult Reengagement



Key Legislative Dates

March Updated Revenue Forecast

March House and Senate Release Budget Proposals

April 3 Policy Cut-Off Opposite Chamber

April 9 Fiscal Cut-Off Opposite Chamber

April 17 Opposite Chamber Cut-Off

April 28 Last Day of the Regular Session

July 1 First Day of the 2019-21 Biennium

Key Academic Policy Legislation

SB 5410

College preparatory programs with exams

HB 1734

Requires accreditation for CiHS programs

HB 1599

Makes changes to high school graduate requirements

SB 5327

Career connected learning

House Proposed Operating Budget

CWU

- \$584,000K - Game On! Program
- \$85,000K - HB 1039 Opioid Overdose Medication

EWU

- \$400,000K - NW Autism Center
- \$250,000K - Lucy Covington Center
- \$32,000K - HB 1039 Opioid Overdose Medication

WWU

- \$70,000K - HB 1039 Opioid Overdose Medication

UW

- \$167,000K - Behavioral Health Campus
- \$400,000K - Behavioral Health Online Courses
- \$50,000K - HB 1039 Opioid Overdose Medication

WSU

- \$10.8 million - Medical School Funding
- \$53,000K - HB 1039 Opioid Overdose Medication

House Budget Proposal



Workforce Investment Assessment: Surcharge is imposed on select advanced computing businesses, computer software publishing/reproduction, conducting original investigation (modeling/simulation), securities and commodities agents/brokers, select information technology consulting, performing central banking functions,

House Proposed Workforce Education Investment Account

CWU

- \$1.9 million - Increase the number of certified K-12 teachers
- \$736,000k - Increase mental health counseling

EWU

- \$2.6 million - Develop a computer engineering degree
- \$1.2 million - Develop a coordinated care network to maximize the connectivity of student support programs

Evergreen

- \$670,000k - Hire additional psychology faculty
- \$580,000k - Increase student success by establishing a new student precollege immersion program and first-year experience program

UW

- \$8.0 million - Increase degree production in the College of Engineering, UWS
- \$1.0 million - Maintain WA state academic redshirt program
- \$1.5 million - Add degree capacity and increase enrollments in STEM, UWB Biomedical Innovation Partnership Zone
- \$1.8 million - Establish BS programs in Mechanical and Civil Engineering, UWT

WWU

- \$3.4 million - Increase access to STEM
- \$800,000k - Hire additional academic advisors and develop a first-year experience program

Senate Operating Proposed Budget

CWU	EWU	Evergreen	UW	WSU	WWU
\$23.85 million - College Affordability Plan	\$21.16 million - College Affordability Plan	\$4.02 million - College Affordability Plan	\$82.8 million - College Affordability Plan	\$58.92 million - College Affordability Plan	\$32.92 million - College Affordability Plan
\$1.24 million - Employee compensation, academic program enhancements, student support services and other institutional priorities that maintain a quality academic experience for WA	\$1.04 million - Employee compensation, academic program enhancements, student support services and other institutional priorities that maintain a quality academic experience for WA	\$1.54 million - Employee compensation, academic program enhancements, student support services and other institutional priorities that maintain a quality academic experience for WA	\$25.9 million - Employee compensation, academic program enhancements, student support services and other institutional priorities that maintain a quality academic experience for WA	\$830,000k - Employee compensation, academic program enhancements, student support services and other institutional priorities that maintain a quality academic experience for WA	\$310,000k - Employee compensation, academic program enhancements, student support services and other institutional priorities that maintain a quality academic experience for WA
\$300,000k - Game On! \$207,000k - SB 5428 Higher ed/Veteran	\$180,000k - SB 5428 Higher ed/Veteran	\$156,000k - SB 5428 Higher ed/Veteran	\$14 million - Expansion of degrees in the department of computer science/engineering Seattle campus \$400,000k - Pre-law pipeline and social justice program at the UWT \$255,000k - SB 5428 Higher ed/Veteran	\$3.9 million - Creation of software engineering and data analytic programs and development of an organic agriculture systems degree program at the university center in Everett \$1.26 million - Creation of an electrical engineering program located in Bremerton \$168,000k - SB 5428 Higher ed/Veteran	\$2.6 million - Develop a new program in marine, coastal and watershed sciences \$1.4 million - Creation and implementation of an early childhood education degree program at the western on the peninsulas campus \$1.16 million - Development of an organic agriculture systems degree program located at the university center in Everett \$192,000k - SB 5428 Higher ed/Veteran

Resources

COP Sector Fact Book

http://www.councilofpresidents.org/2019_01_COP_Sector_factbook.pdf

COP Fact Sheets and One-Pagers

http://www.councilofpresidents.org/index-3_issues.html

COP Bill Tracking

http://www.councilofpresidents.org/billtracker_2019.htm

CONTACTS

Council of Presidents: <http://www.councilofpresidents.org>

Central Washington University: www.cwu.edu

Eastern Washington University: www.ewu.edu

The Evergreen State College: www.evergreen.edu

University of Washington: www.washington.edu

Washington State University: www.wsu.edu

Western Washington University: www.wvu.edu

Council of Presidents Contact

Julie Garver, Ph.D.

Director of Policy & Academic Affairs

Council of Presidents

360-292-4102

garverj@cop.wsu.edu